

## Hōkūlani Model 110



*Artist's concept—this illustration may show options not included in the base price.*

*Three bedrooms, den and two-and-a-half baths. The elegant master suite and den are located on the main level. The two additional bedrooms, a lanai and loft are located on the upper level.*

*12' ceilings enhance the great room and dining areas with easy access to the covered, main-floor lanai. The kitchen features a huge center island for informal dining and entertaining.*

---

Main level	1718
Upper level	711
Main Level Lanai	398
Upper Level Lanai	112
Entry	48
Garage	584
TOTAL	3571

---



*Signature Homes*  
OF HAWAII



*Signature Home*  
OF HAWAII

Plan 110

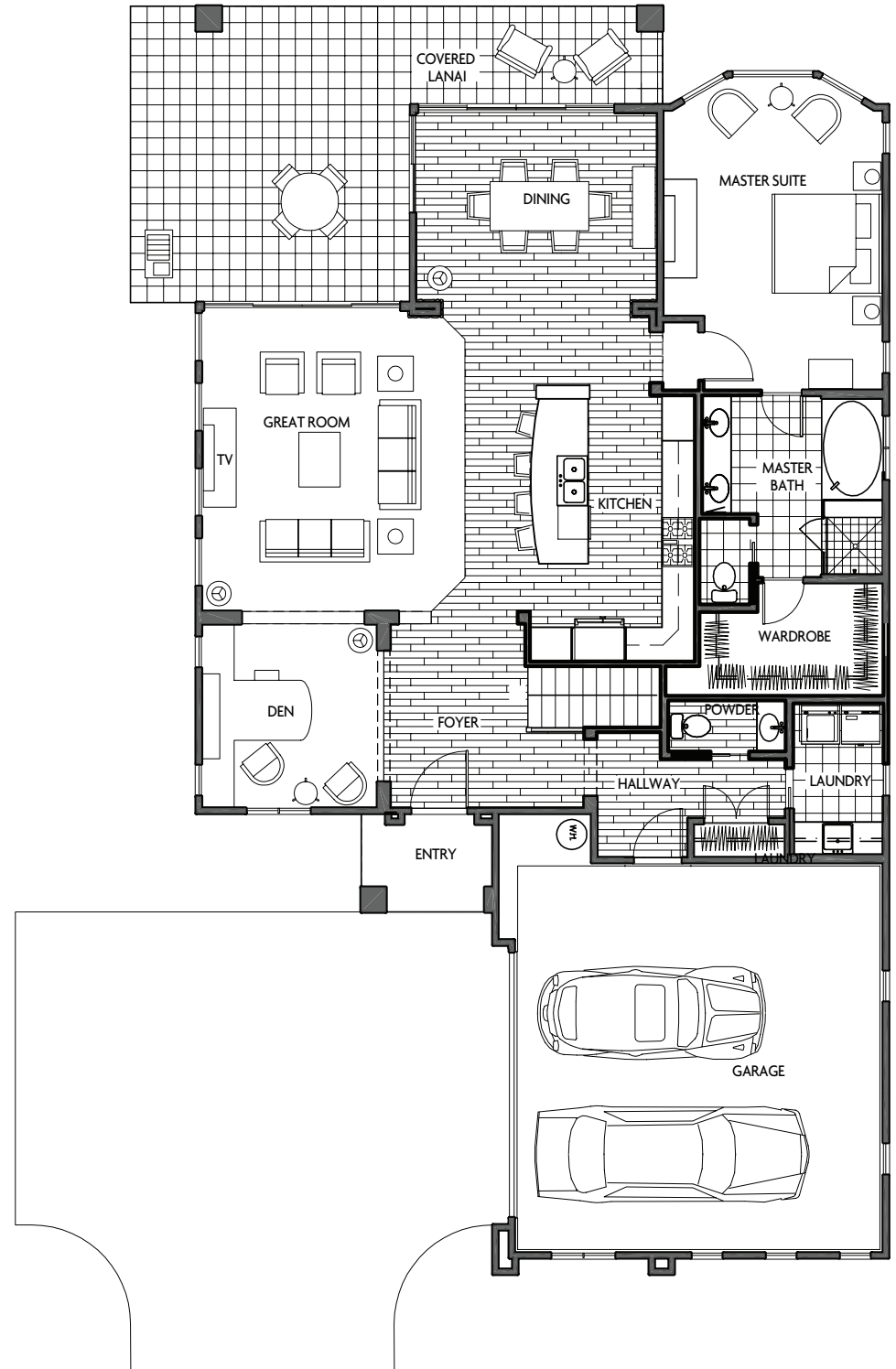
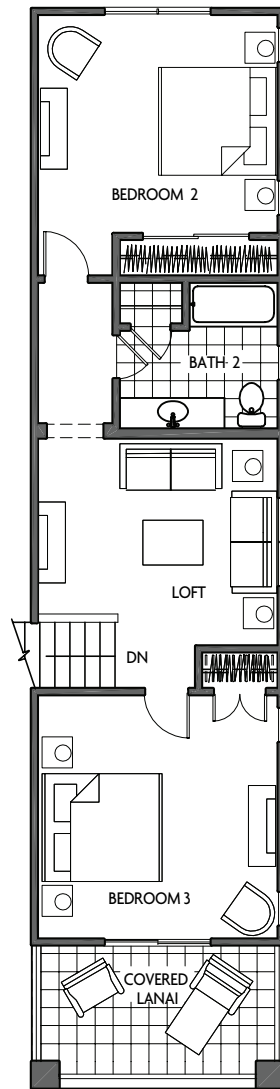
---

Main Level	1718
Upper Level	711
Main Level Lanai	398
Upper Level Lanai	112
Entry	48
Garage	584
Total	3571

---

Artist's concept

These architectural plans and the home constructed pursuant to the plans are the exclusive copyrighted property of Signature Homes of Hawaii and are protected by United States copyright law. Any unauthorized use of these plans is strictly prohibited.  
Copyright 2004.



# Hokulani

GOLF VILLAS

## Signature Features

---

### COMMUNITY

Breathtaking Views of the Ocean, Mountain and Golf Course  
Extraordinary Infinity Waterfall Pool Center  
Community Clubhouse for Neighborhood Gathering or Private Parties

### SIGNATURE EXTERIOR

Architecturally Designed Exteriors and Floor Plans  
Stucco Exteriors with Tiled Lanais  
Monier Tile Roofs  
Private Concrete Driveway with Oversized Courtyard Garage  
Carriage Garage Door with Two Transmitters and Keyless Entry  
Exposed Eaves with Grooved Profile  
Energy-Efficient, Maintenance-Free Windows and Sliding Doors with Low E Glass  
Professional Landscaping and Sprinkler System  
Etched-Glass Front Door  
Dramatic Covered Entry

### SIGNATURE LIVING AREAS

Solid Two-Panel Enameled Doors with Satin Nickel Lever Hardware  
Tile in Kitchen, Foyer, Dining Room  
Ceramic Tile Floor in Bathrooms and Laundry Room  
Carpet in Great Room, Den and Bedrooms  
Drop-in Laundry Sink and Cabinet  
Solid -Surface Countertops in Laundry and Bathrooms  
Rocker Switches  
Prewired Rough-ins for Security and Surround Sound  
High-Tech Wiring Package Including Cable and Phone Jacks per Model  
Engineered I-Joists  
Attractive Recessed Lighting per Model  
Custom Wood Stair Railing System  
Overhead Ceiling Fans in Great Room, Master Bedroom and Lanai  
Access to Lanai from Dining Room and Great Room  
Painted Ceiling-Cove Moulding in Main Living Areas  
Finished Garage Interiors

### SIGNATURE KITCHEN

Custom-Designed Cabinets with Accent Glass Uppers  
Granite Slab Countertops with Ceramic Tile Backsplash  
Gourmet Stainless-Steel Kitchen Aid Appliances including:  
Gas Cooktop, Built-in Oven/Microwave Combo, Refrigerator  
Dishwasher. Includes Water Line for Icemaker  
Stainless-Steel Undermount Sink and Pull-out Spray Faucet  
Recessed Lighting with Pendant Accents over Center Island  
Dramatic Center Island with Snack Bar Overhang  
Elegant Formal Dining Area

### SIGNATURE MASTER SUITES

Vaulted, Coffered Ceilings per selected plans  
Spacious Walk-in Closets  
Solid-Surface Countertop  
Ceramic Tile Floors, Tub Decks and Showers  
Luxurious Soaking Tub

### SIGNATURE CONSTRUCTION FEATURES

High-Efficiency Central Air Conditioning  
Gas Water Heater  
200 Amp Electrical Service



*Signature Homes*  
OF HAWAII

---

*Because of our ongoing research to develop better building methods and materials, we reserve the right to change elevations, specifications, materials and prices without further notice.*